

EDITORIAL

Editor's Words

Yacht Impressions

- ▶ New Launchings
- ▶ Yacht Features
- ▶ Photo of the Day

Yacht Design

- ▶ Design News
- ▶ Yacht Decoration
- ▶ Yacht Designers

Yacht Construction & Refit

- ▶ Contracts & Orders
- ▶ Refitting
- ▶ Building
- ▶ Products
- ▶ Classifications
- ▶ Technical Issues
- ▶ At the Yard

Yacht Ownership

- ▶ Yacht Management
- ▶ Yacht Support
- ▶ Yacht Registration
- ▶ Legal & VAT Issues
- ▶ Finance & Insurance
- ▶ Yacht Owners

The Tristrike 420 Project

Thursday, 2 July 2009



Michael Ferris, Director of Prout International Super Yacht Division has announced to SuperYachtTimes.com the Tristrike 420 Project. This 420'/128m tri-hull, motor yacht intended for all oceans, long range, and expedition passage making. Based on a proven military design heritage the Tristrike platform is a "mind blowing" 128m / 420' X 27.5m / 90'.



The hull and deck is to be constructed in high-grade steel and fitted with a hi-tech infused vinyl ester composite five (5)-deck superstructure and modular interior furniture D.V.M. Classification and S.O.L.A.S. Fitted with three MTU 2000 diesel power plants, developing 6,000hp the vessel is calculated to have a top speed of 18 knots with a displacement of 2,500 tons. Optional turbine engines developing 26,000hp, yields a projected top speed of 40+ knots for the foiled version... Due to the tri-hull configuration aided by the Computer-Assisted-Control (C.A.C.) stability active foils, the calculation for anti-roll and high-speed control is exceptional for all sea states, for the foiled version at speeds in excess of 25 knots.

This five-deck trimaran, expedition styled yacht's interior design and styling is to be by Q-Design, an established and renowned U.K. based

RANDOM YACHT



[Achilles III](#)

YACHT DIRECTORY

- ▶ [Shipyards](#)
- ▶ [Designers](#)
- ▶ [Brokers](#)
- ▶ [Ports & Marinas](#)
- ▶ [Yachting Events](#)
- ▶ [Suppliers & Services](#)

MEMBERS LOGIN

Login:

Password:

- ▶ [Forgot Password](#)



Yacht Market

- [Brokerage](#)
- [Charter](#)
- [Yacht Brokers](#)

Crew Issues

- [Crew News](#)
- [Qualifications & Training](#)
- [Crew Jobs](#)
- [Yacht Crew](#)
- [Crew Shots](#)

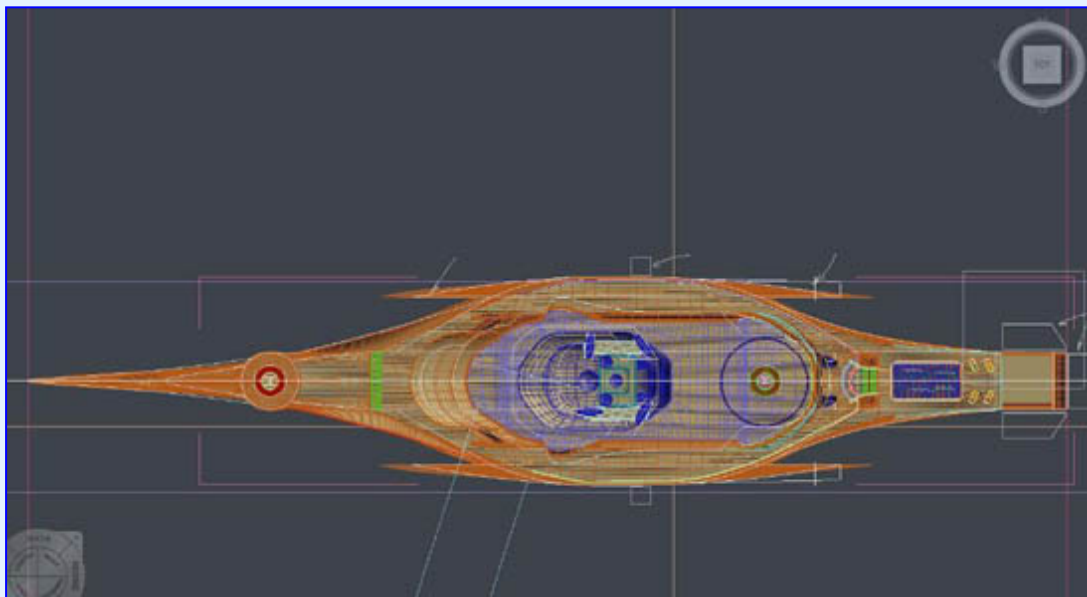
Yacht Events

- [Yacht Shows](#)
- [Yacht Regatta's](#)
- [Other Yacht Events](#)

Destinations

- [Ports & Marinas](#)
- [Mediterranean](#)
- [Caribbean](#)
- [America's](#)
- [Pacific](#)
- [Other Destinations](#)

design firm known for their work in the commercial and private aviation sector. The centerpiece for Tristrike 420 interior is the five-deck Atrium accented by a waterfall grand foyer.

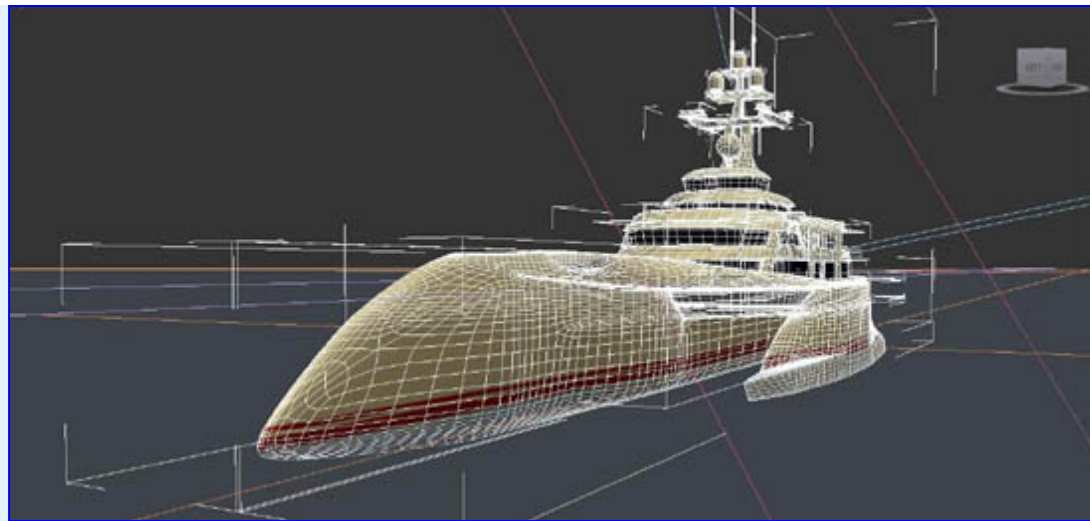


The main deck is fitted for elegant social gatherings consisting of a total of 4,000s.f. for Grand Salon / Ball Room, Board Room, Business Center, Commercial Gourmet Kitchen, Cafe Dining Area, Grand Dining Room, Library, Bar Area(s) and Media Center for 40 persons, Junior Media Center and Sky Lounge and much more. The Upper deck level four is configured as the "Private Family Deck" offering a 2,000s.f master suite and (3) three V.V.I.P. family suites each measuring 1,000s/f. All family suites are to be fitted with their own private 200-s.f. balconies subject to helicopter requirements. Private family social areas and alfresco areas are also configured on this deck level.

Guest accommodations are 18 staterooms configured in: king, queen and doubles berths. Guest suites measure 400 to 300s/f each. All guest suites are fitted with deluxe baths and viewing port lights. Crew cabins are located on the lower decks for 25-35 crewmembers. Additional executive / personal staff consists of six larger sized cabins located on decks one and two. Captain's stateroom and Ships Officers cabins are located on the bridge deck and engineering areas.

• [Register](#)

SITE SEARCH



The vessel is to be fitted with Helipad and hanger, alfresco areas, observation deck, 30' Guest Sport Tenders and 25' Captain's tender, crane(s) and water toys and crew RIB type tenders. A swimming pool maybe fitted on the aft deck or the aft deck may be used as "mother ship" for small 30+-ton support vessel or convertible sport fishing vessel. The Tristrike 420 Project by Prout International is intended for "private yacht" class use or for "global elite charter". The Tristrike 420 is to be constructed to highest industry standards, classification(s) and yacht finish.

Prout International
Michael G. Ferris
mferris@proutinternational.com
www.proutinternational.com

Advertisement

[ABOUT US](#) [ADVERTISE](#) [CONTACT](#) [MEDIA](#) [PRIVACY](#) [DISCLAIMER](#)

Copyright © 2007 / 2008 / 2009, SuperYachtTimes.com. All Rights Reserved.

E-mail: info@superyachtimes.com

Valid [XHTML](#) & [CSS](#)